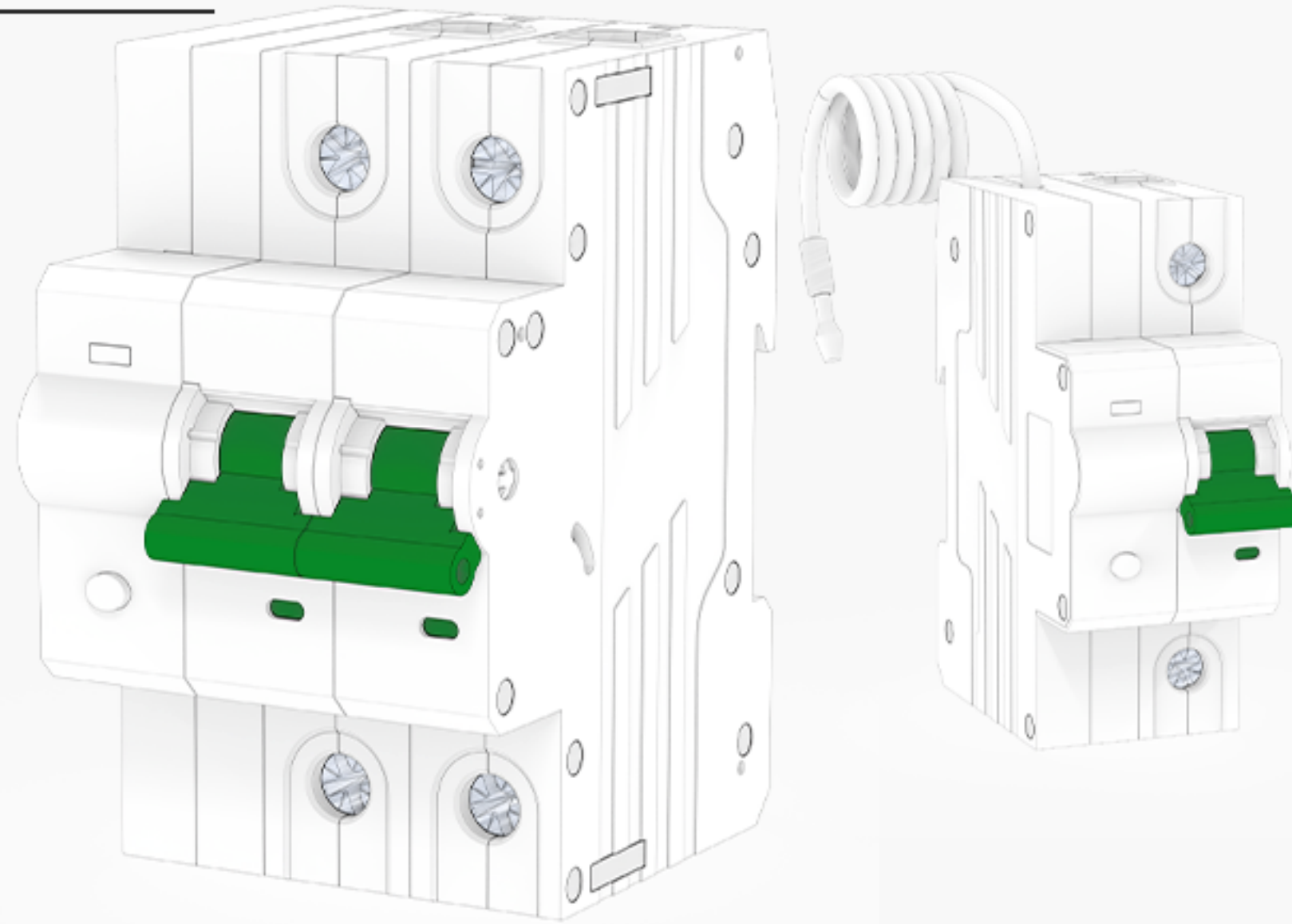


WiFi Metering Circuit Breaker (Smart Life APP)

Operating Manual



Download APP



Component Type: TOQCB1-TJ-100

Main Function



Remote
control



Voice
control



Temperature
Protection



Cloud
Timing



Real-time
Metering



Automatic
Reclosing

Parameter Setting

(The value can be adjusted)

Over Current Protection

1A  100A

Function Status

Shutdown **Alarm** Trip

Over Voltage Protection

105%  130%

Function Status

Shutdown **Alarm** Trip

Under Voltage Protection

65%  95%

Function Status

Shutdown **Alarm** Trip

Temperature Protection

-40°C  200°C

Function Status

Shutdown **Alarm** Trip

Over Power Protection

5W  8800W

Function Status

Shutdown **Alarm** Trip

Main Data Parameter

Component Type: **TOQCB1-TJ-100** Poles description: **1P, 2P**

Rated operating voltage range (threshold adjustable): **100V-330V**

Curve Code: **C** Breaking Capacity: **10kA**

Control Type: **Remote control, Automatic, Manual**

Protocol: **WiFi (Default)**

Customization: **Lora, SigMesh, RS 485, ZigBee, RJ45**

LED Indicator Description

The **LED** indicator shows a steady blue light to indicate that the circuit breaker is disconnected.

The **LED** indicator shows a steady red light to indicate that the circuit breaker is connected.

The **LED** indicator shows red flashing slowly, indicating that the product is in pairing mode.

The **LED** indicator does not light up to indicate the off-grid mode, and the LED indicator will not light up when turned on or turned off the circuit breaker.

Live View

TOQCB1-TJ-100 can monitor the current, voltage, and power of the load equipment in real time, and can also record the power consumption of the year, month, day, hour, and different time periods, helping users to check the power consumption of load equipment more clearly. Setting the switch status of the equipment in different scenarios, and remotely monitor the real-time situation of the load electrical appliances.



Real Current

7.4A



Real Voltage

235.3W

P0

Real Power

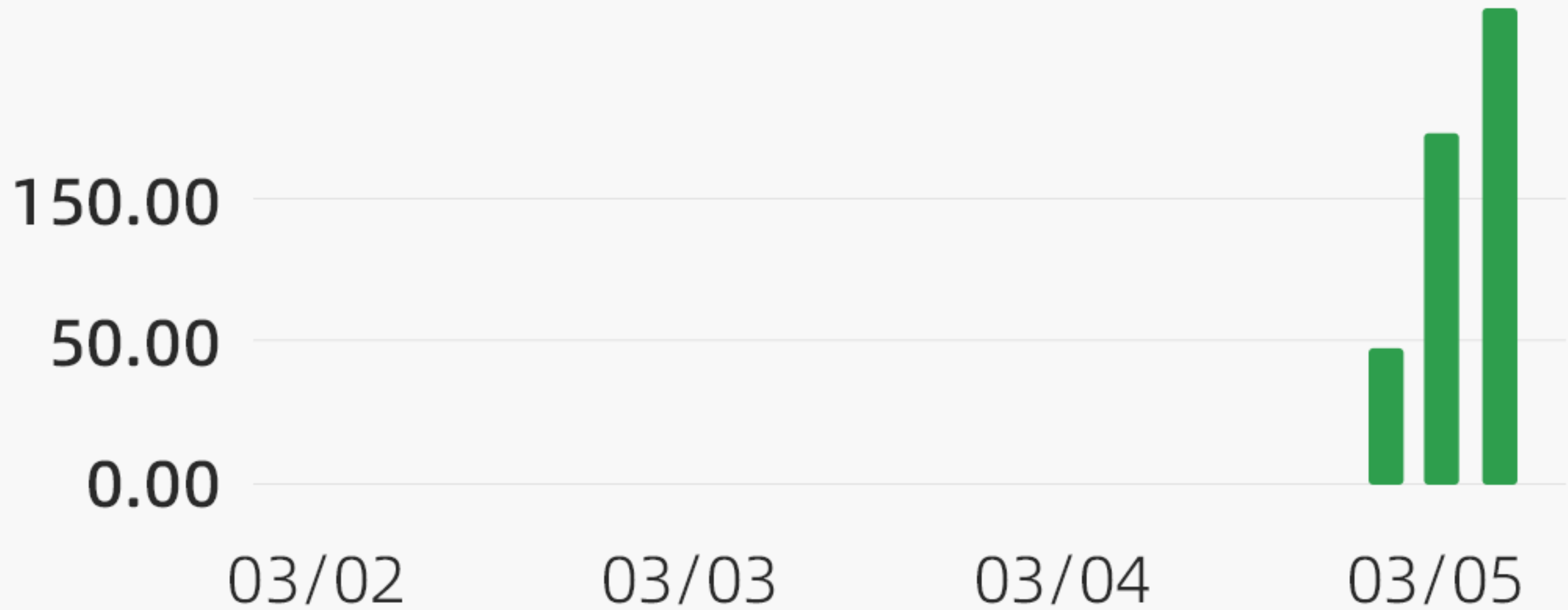
1731W

7

Month

Day

Year



2022/03

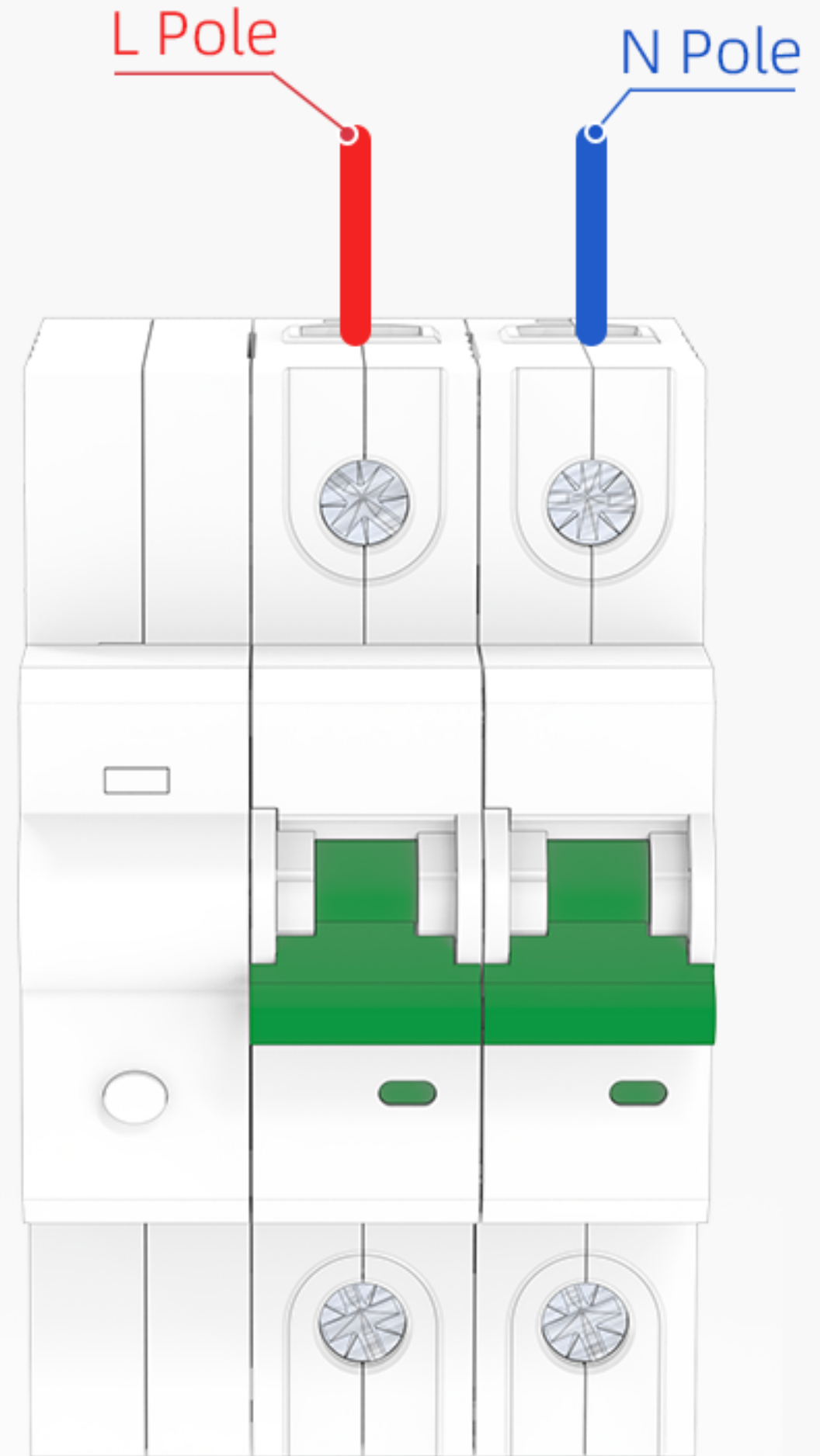


Real-time monitoring electricity consumption.

Configuration Steps

First Step:

To connect the wire from the upper of the **TOQCB1-TJ-100** WiFi circuit breaker, the live wire connect to the L pole, and the neutral wire connect to the N pole, please make sure that the wiring is correct and strong WiFi signal.



Configuration Steps

Second Step:

Turn on the Bluetooth and WiFi of the mobile phone, open the APP, and then long press the elliptical “Configuration” button, wait for about 5-10 seconds, the LED indicator will flash slowly .



Log in

Register

Configuration

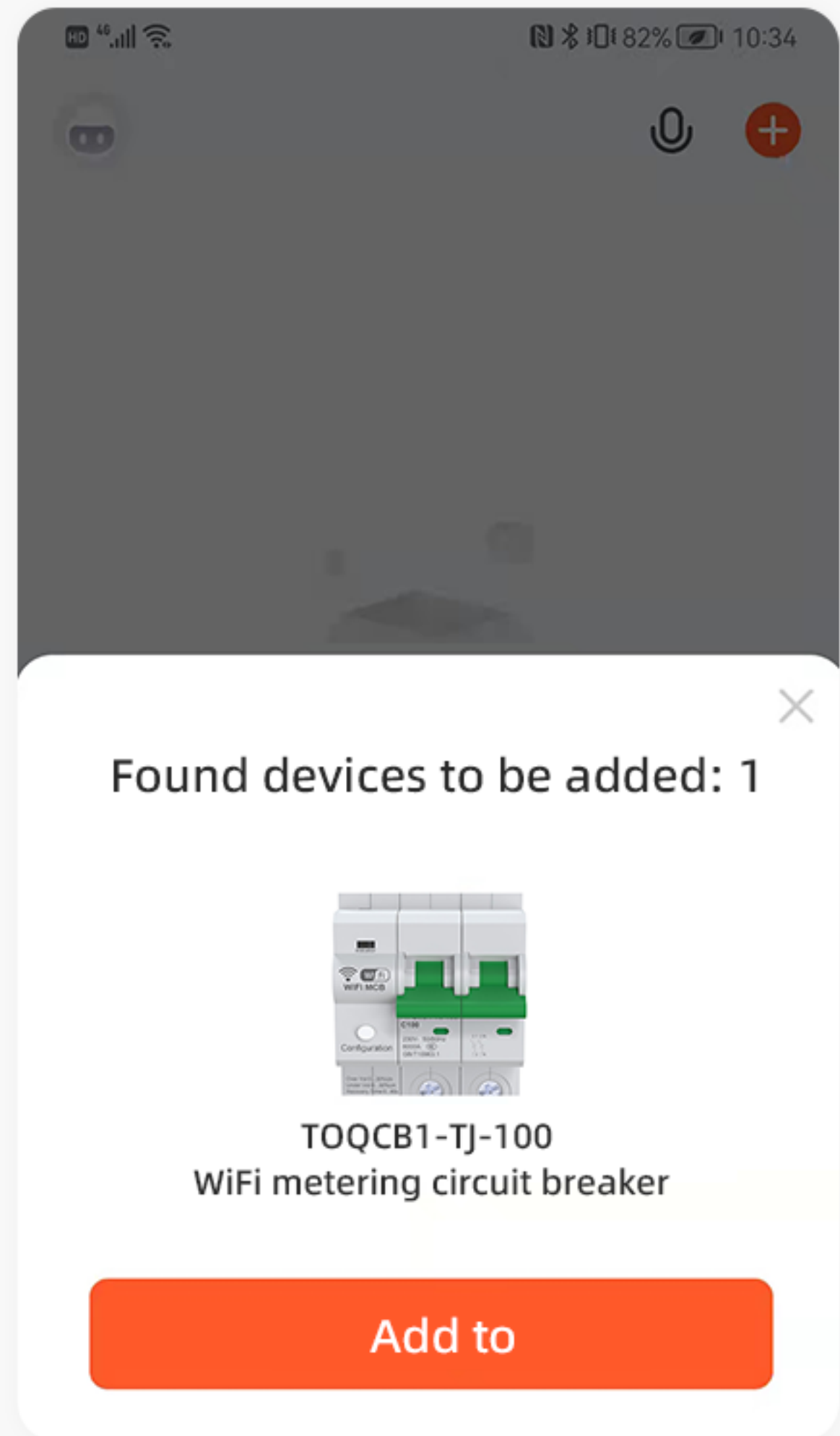


If the LED indicator in slow flashing status already, you can go to the next step directly.

Configuration Steps

Third Step

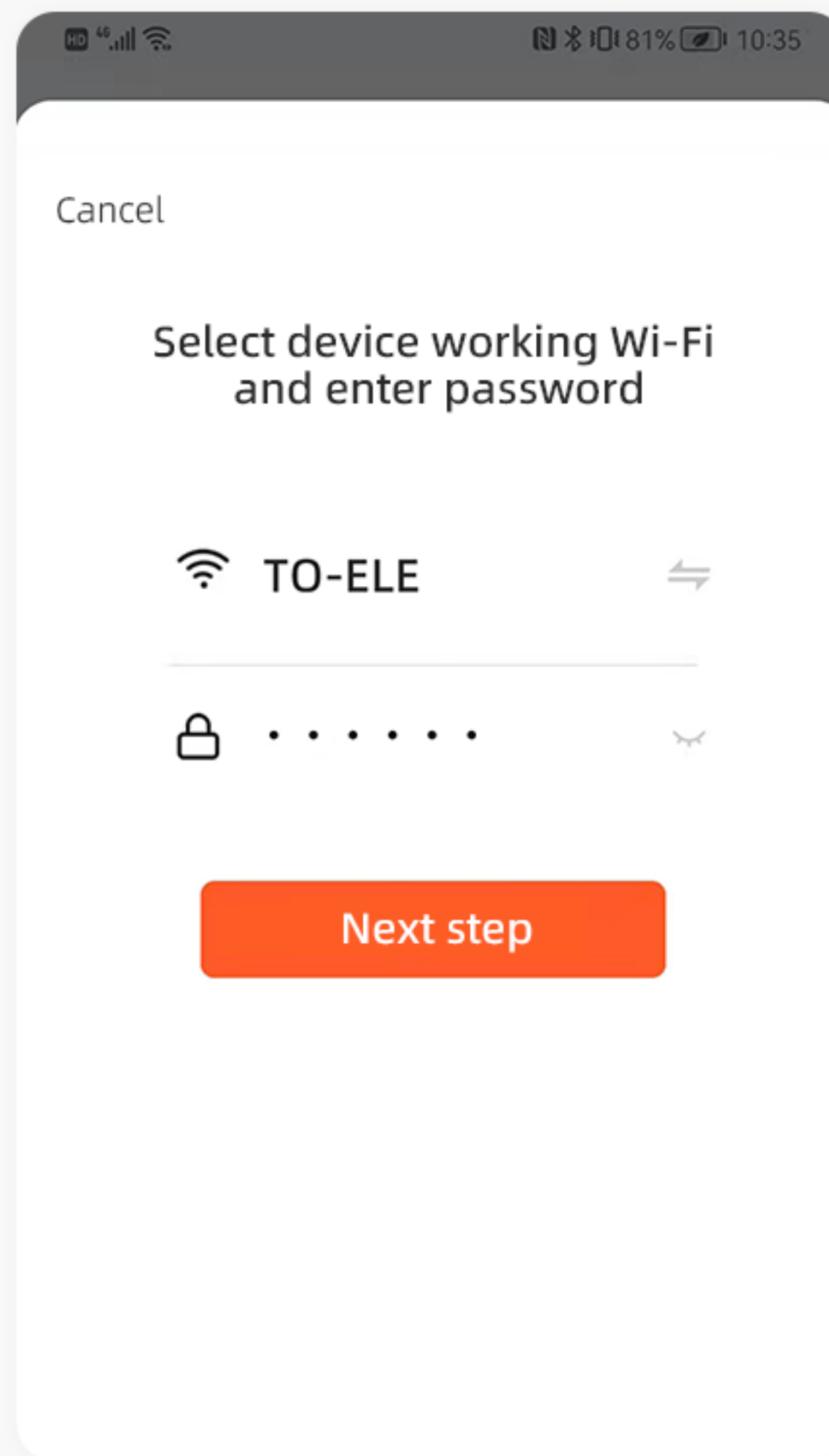
Waiting for a while after graphics is displayed the APP, or click the "+" in the upper right corner, then choose the "Add Device" button to wait discovering devices, then click "Add" button.



Configuration Steps

Fourth Step:

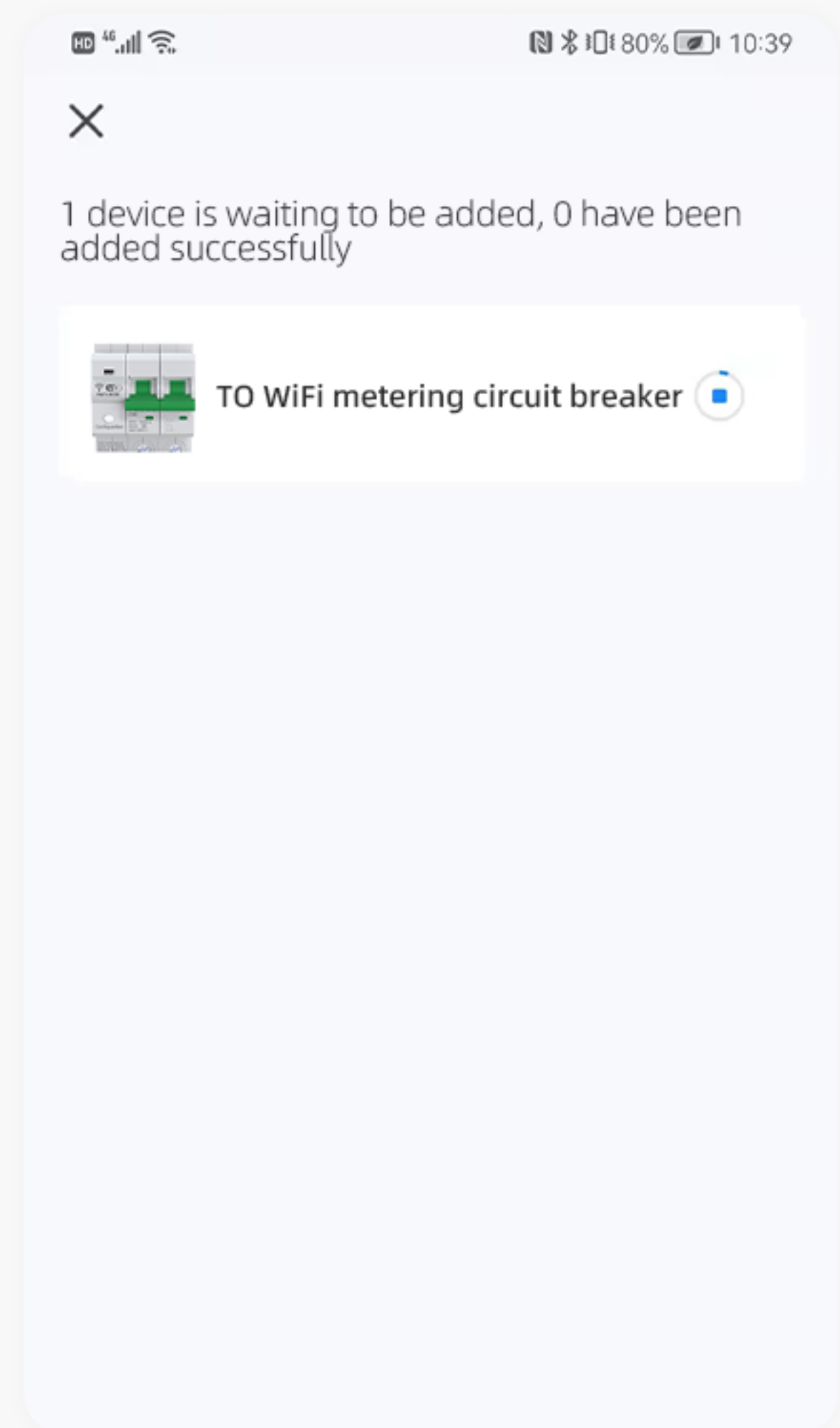
Enter the wifi account password and click After one step, wait for the circuit breaker to connect the network.



configuration steps

Fifth Step:

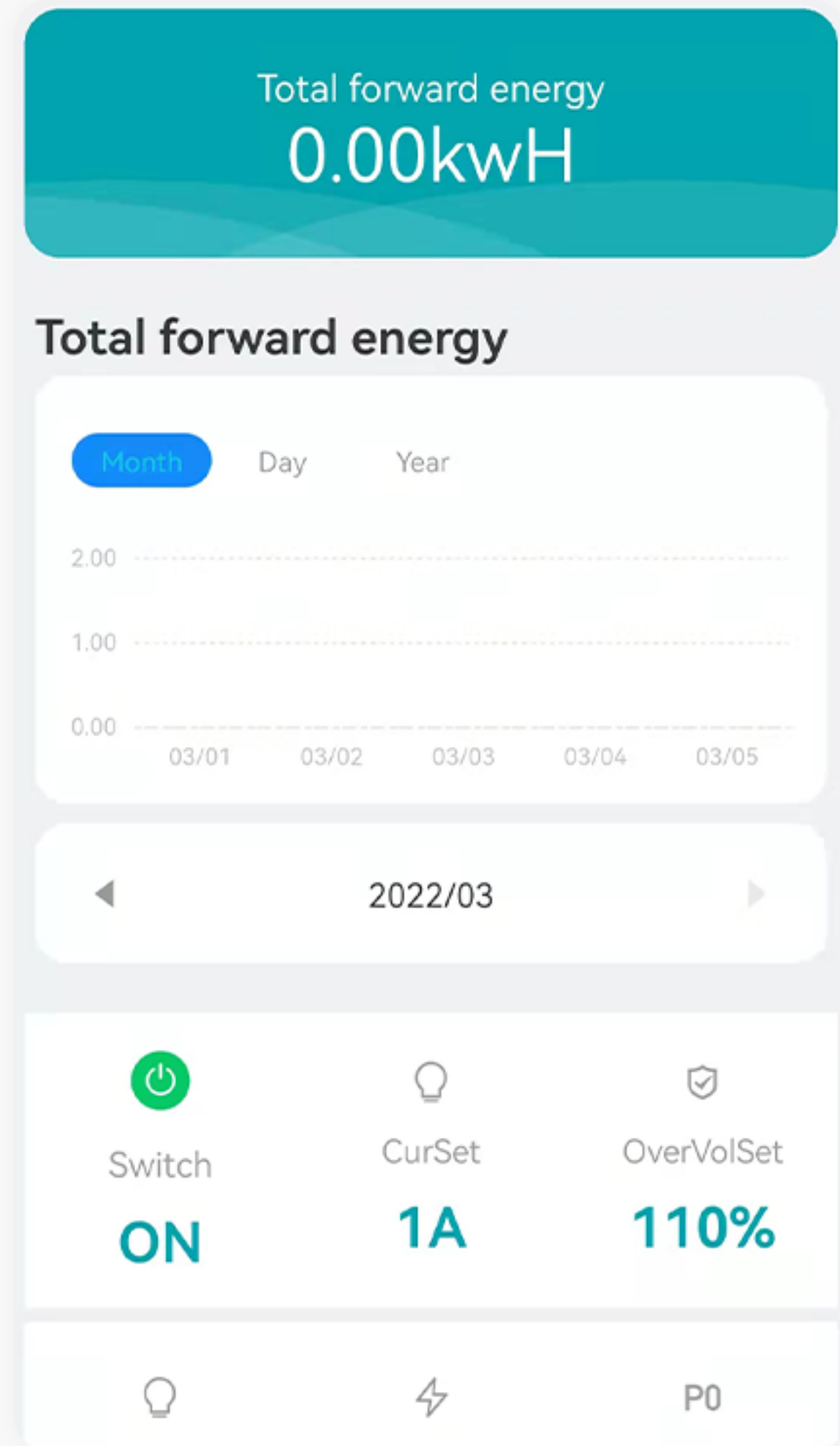
The circuit breaker is connected to the network.



Configuration Steps

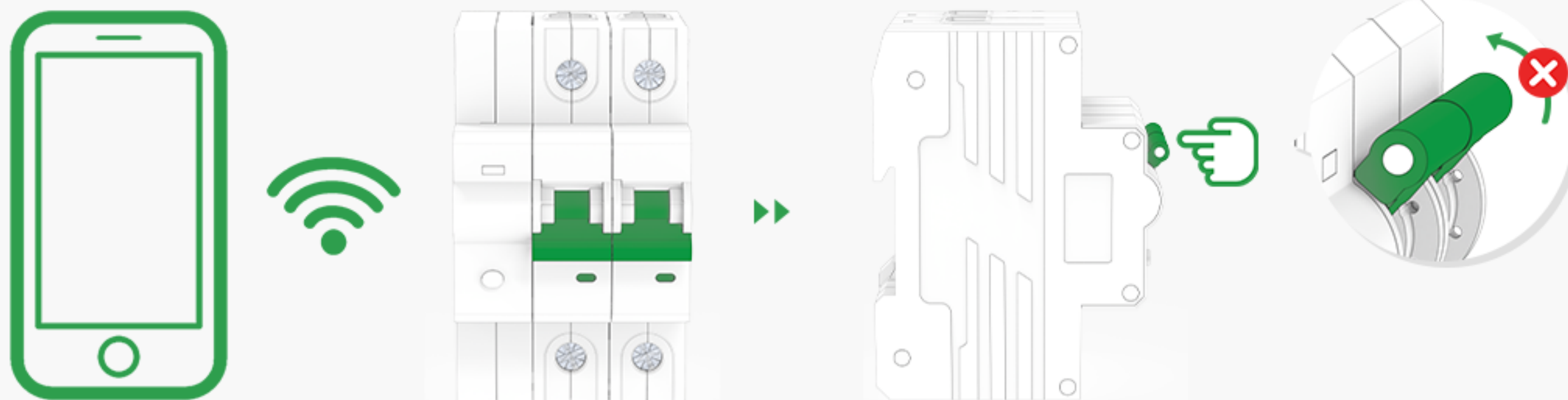
Sixth Step:

After the successful connection, the LED indicator will be changed from red slow flashing to red steady light.



Turn On Remote Protection Mode

If the WiFi circuit breaker is disconnected by remote control (non-manual operation), the product will be in remote protection mode, but the WiFi circuit breaker cannot be closed manually, even if the device is removed by the APP, it is still in remote protection mode.



Turn Off Remote Protection Mode

After the WiFi circuit breaker is turned on by remote control, by manually operating the switch of the device once, the device will quit the remote protection mode, and the device can be manually turn on or turn off.

